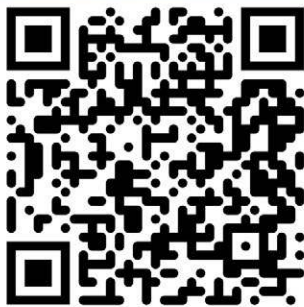


# CAFÉ KETTLE



## INSTRUCTION MANUAL



START WITH OUR VIDEO BREW  
GUIDE VIA THE QR CODE

<https://flaresso.com/flair-kettle-tutorials>



# GETTING STARTED WITH YOUR CAFÉ KETTLE

## The Quick Intro

Thank you for purchasing the Café Kettle from Flair Espresso. We strive to make espresso brewing easy, affordable and fun. A kettle is a key component to any home espresso bar, and we're so glad you've chosen to brew with Flair.

Depending on your location, you will have received either a 110v or a 220v compatible kettle. Only the 110v kettle has the option to brew in Fahrenheit. The software on the Café Kettle is meant to be easy and intuitive. There are three functions to choose from, with more instructions on the following pages:

- **Quick Boil:** Heats your brew water to a selected temperature, then turns off.
- **WARM:** Heats your brew water to a selected temperature, then maintains that temperature for 30 minutes before turning off.
- **Quick Boil & WARM Combo:** Heats your brew water to 100°C (or 212°F) then returns it to a selected WARM temperature for 30 minutes before turning off.

## FITS LIKE A GLOVE

Connecting Your Kettle to the Power Base

*Your Café Kettle fits into the base with the handle oriented over the Display and controls. It will not fit onto the Power Base in any other position.*

*Once on the base, the kettle will swivel roughly 15° in either direction, left or right, to ensure good visibility of the Display and controls. It doesn't matter if you're left or right handed - we've got you covered!*



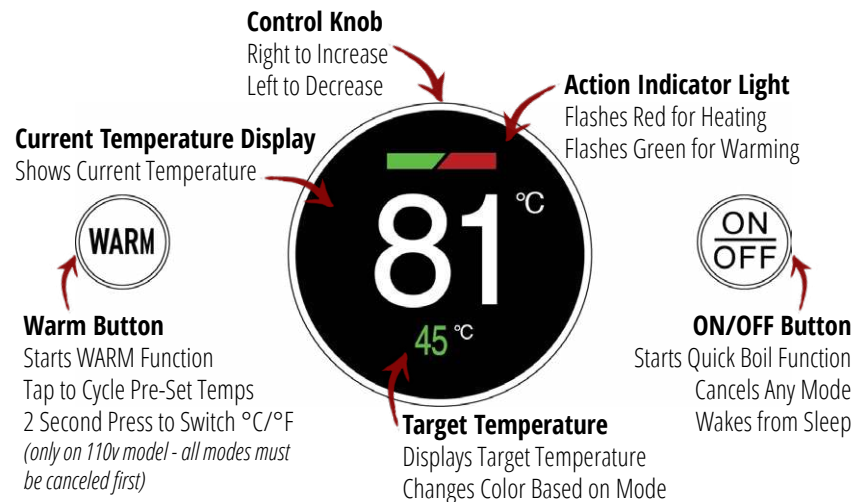
## WHAT'S IN A KETTLE

Kettle Parts You Need to Know



## BREW YOUR BEST LIFE

Basic Kettle Functionality



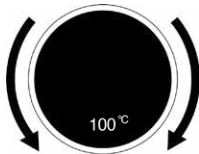
## USING THE QUICK BOIL MODE

Some Like It Fast and Hot

The Quick Boil mode will get you brewing fast. The default setting for the Quick Boil mode is 100°C (or 212°F) but a specific temperature can be selected by turning the knob after pressing ON/OFF. Once a new Quick Boil temperature is selected, it will be stored in the kettle's memory until a new temperature is selected, or the defaults are reset by unplugging the kettle. To operate the Quick Boil mode, follow the steps below.



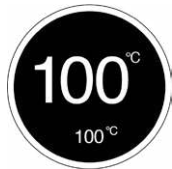
Tap the ON/OFF Button to start the Quick Boil Mode.  
*(If the display screen is asleep, first tap ON/OFF to wake)*



Select a specific temperature by turning the knob.  
If no temperature is selected, stored temp will be activated.  
*(In Quick Boil Mode the Target Temperature Selector will be White)*



Once temperature is selected, kettle will beep to start heating.  
Action Indicator Light will flash red while heating.  
Current Temperature Display will show increasing temperature.



Once target temperature is reached, kettle will beep 2 times.  
Heating will shut off, with no warming taking place.  
After 30 seconds, the display will go into sleep mode.

*Note: If you select a temperature that is below the current temperature of the water in the kettle, the Quick Boil mode will cancel.*

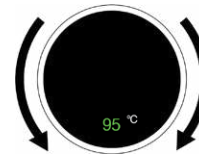
## USING THE WARM MODE

Others Like It Warm and Cozy

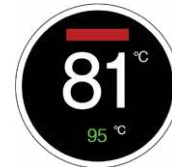
The WARM mode will heat your water and maintain that temperature for 30 minutes, just in case you want to brew now and later! The WARM mode allows you to select a specific temperature, or a pre-selected temperature of 45/60/70/80/85/90°C. Choosing one of the pre-selected temperatures is as easy as tapping the WARM button to cycle through the options. To operate the WARM mode, follow the steps below:



Tap the WARM Button to start the Quick Boil Mode.  
Continue to tap the WARM button to cycle through available temperatures 45/60/70/80/85/90°C.



If you don't want to use a pre-selected temperature, select a specific temperature by turning the knob.  
*(In WARM Mode the Target Temperature Selector will be Green)*



Once temperature is selected, kettle will beep to start heating.  
Action Indicator Light will flash red while heating.  
Current Temperature Display will show increasing temperature.



Once target temperature is reached, kettle will beep 2 times.  
Action Indicator Light will flash green while warming.  
Kettle will keep water warmed at selected temp for 30 minutes.

*Note: If you select a WARM temperature that is below the current temperature the kettle will slowly reduce temp until reaching the target temp. Then it will warm for 30 minutes before returning to the sleep mode.*

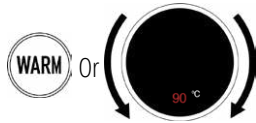
## USING THE QUICK BOIL & WARM COMBO MODE

Best for Purifying Water That Might Be Unsafe

The Quick Boil & WARM Combo mode is meant for those that need to boil their water before brewing, to ensure the water is safe to drink. Once the water is boiled at 100°C, the kettle will return to the selected WARM temperature and keep the water there for 30 minutes. To operate the Quick Boil & WARM Combo mode follow the steps below.



Then Tap the ON/OFF Button then the WARM button.  
*(If the display screen is asleep, first tap ON/OFF to wake)*



Or Select a WARM temperature by turning the knob or by tapping the WARM button to choose a pre-selected temperature.  
*(In Quick Boil & WARM Mode the Target Temperature Selector will be Red)*



Once temperature is selected, kettle will beep to start heating. Action Indicator Light will flash red while heating to 100°C. Current Temperature Display will show increasing temperature.



Once boil is reached, kettle will beep 2 times. The kettle will allow the water to cool to the selected WARM temperature. It will keep the water warm for 30 minutes. Action Indicator Light will flash green while warming.

## A MIND OF ITS OWN

Your Kettle Has a Memory

*Your Kettle has its own memory, which means it can store settings and previous selections, such as your quick boil temperature and the temperature settings between °C and °F. When in sleep mode, the kettle will maintain these selections. To reset to the defaults, simply unplug your kettle from the wall, and plug back in. This will restore the defaults; Fahrenheit on 110v and 100°C (212°F) for the quick boil.*

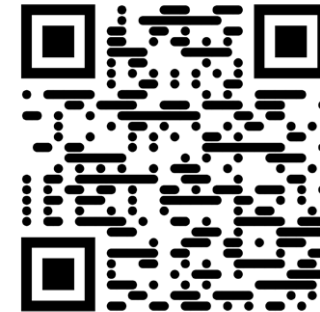
## YOU CAN'T BE TOO CAREFUL

Basic Warnings to Adhere To

- Ensure the water level is between the minimum and maximum as seen on the kettle walls. Do not over or underfill. An overfilled kettle may splash boiled water. An underfilled kettle risks burning the heating element.
- Do not cover the steam vents on the kettle lid.
- Never submerge your kettle in water. Ensure the connection port between the base and the kettle remains dry.
- Always hold the kettle by the handle, never the body, which will be extremely hot after use and may cause burns.
- Do not place excessive force on the lid of the kettle. Doing so could eject boiled water.
- This device is not intended for children, and is not safe for them to use. Please ensure appropriate safety precautions when children are present.
- Be mindful of all cords and plugs to ensure the kettle is in a safe position. Never let cords dangle over the edge of a counter or table.
- Never boil or put any liquid in the kettle other than water.
- Never tip the kettle completely upside down. Water may eject from the steam vents or the lid may unseat.
- Don't use the plug with wet hands.
- Do not open the lid when boiled or heated water is inside.
- Be sure to only place the kettle on an even, solid surface.
- Your kettle may require descaling from time to time. Before cleaning or descaling, ensure the kettle is turned off and cool.
- Do not try to pick up the kettle by the lid.
- When using your kettle, ensure it is not placed beneath a cabinet or near a wall. Constant steam interaction can damage surfaces. A distance of 30cm is recommended.

## FLAIR'S WORLD-CLASS CUSTOMER SERVICE IS A SNAP AWAY

Troubleshoot Your Café Kettle



Reach Us Directly: <https://flairespresso.com/contact/>

# CAFÉ KETTLE



28 Hammond Street, Suite B  
Irvine, CA, 92618-USA  
© Intact Idea, All Rights Reserved

Flair is a trademark of Intact Idea, LLC  
Designed in California  
Made in China